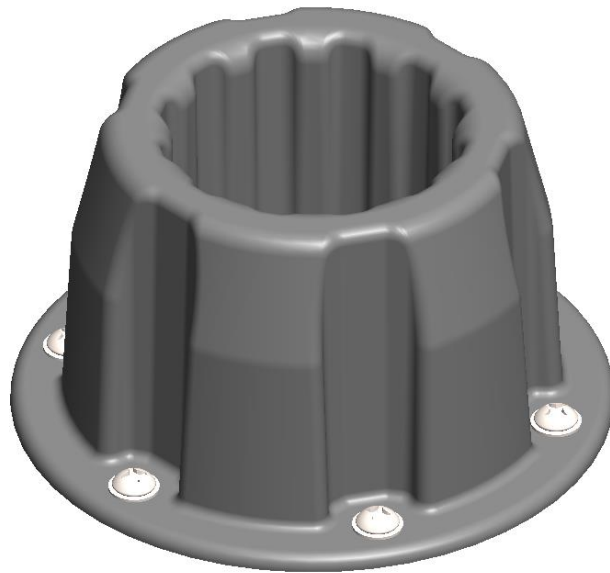


INSTALLATION GUIDE



Mission Innovation Nature thanks you for purchasing a product proudly designed and made in Canada. Your satisfaction is a priority for us. For any questions or comments please contact us through our website.

Web site: www.minfishing.com

Warnings!

- Plastic bags and small parts contained in this product can be dangerous. To avoid the risk of suffocation, keep out of the reach of babies and children.
- Read the instructions carefully before starting to avoid assembly errors.
- Do not use lubricants for the screws and for the base since the chemicals could damage the plastic.
- Always make sure that the fishing rod holder is correctly inserted into the base before each fishing trip.

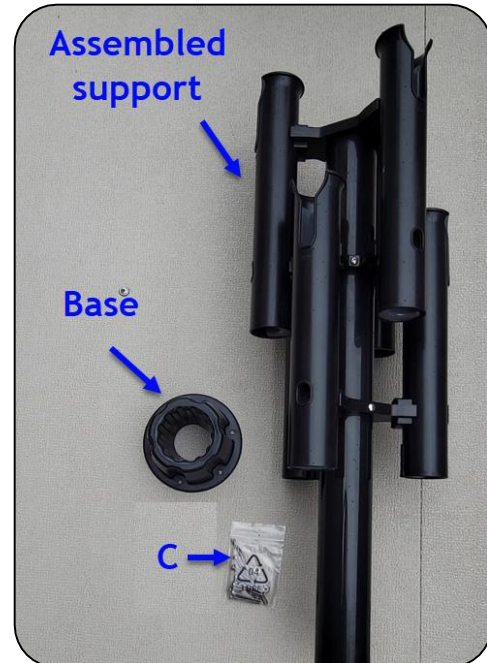
Note:

For boats that have 2 3/8" diameter seat bases with empty centers, your fishing rod support can fit into the base supplied with the product as well as the seat bases.

1. Prepare work tools.



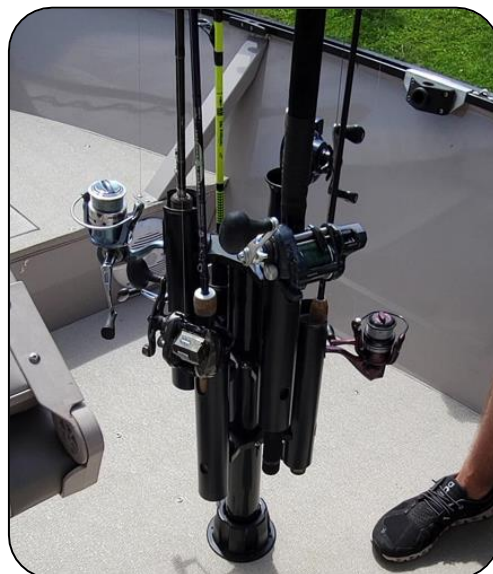
2. Prepare the assembly parts.



3. Insert the support in its base and place all your fishing rods (prioritize those with larger reels).

Warning! Risk of breaking your fishing rods. Hold the support to prevent it from falling while you install the base. Try to balance the fishing rod weight. Ask help from someone if necessary.

Note: It is always possible to remove some gray inserts for fishing rods with larger diameter handles. It's up to you to make your optimal configuration of your fishing rod support.



4. Place the support in the desired location making sure there is no conflict with benches, livewell doors, trunk doors and any other object. Rotate it to make sure all rods don't have conflict in critical areas (ideally leave 2 inches of clearance all around).



5. Validate that there is nothing underneath before drilling. Remove all floor screws and lift to check underneath.

Note: Installation may vary depending on type of boat. If your are not sure, you can ask help from a professional.



6. Make sure there are no electric wires, fuel tank, hoses, or any other critical parts underneath. Be sure that there is enough space between floor and hull to avoid damage it during drilling.



7. Determine if you need to screw or bolt your base.

- If it's a wood floor with 5/8 " thickness, you can screw or bolt it.

- If the mounting location is thin aluminum, fiberglass, or other thin material it must be bolted. Warning! you must have access below to put the washers and nuts.

Note: If there is no access underneath like in some fiberglass boats you can use the screws. The pre-drill diameter should be larger than the heart of the screw, but smaller than the outside of the threads. Usually in fiberglass you need to use a 9/64 " drill bit. Do a test by drilling smaller and getting bigger as needed. If in doubt refer to a professional in the field.

9. Place back the floor and install temporarily two floor screws to prevent it from moving. Place the support with its base to the desired location and mark the 6 fixing holes.



8.

For screwed installation go to step 9.

For bolted installation go to step 13.

10. Use bag of screws C and a 1/8 " drill bit to pre-drill. Remove the rod holder and drill at the 6 marks. The pre-drill allows you to drill through wood as well as aluminum studs if you drill in one of them.

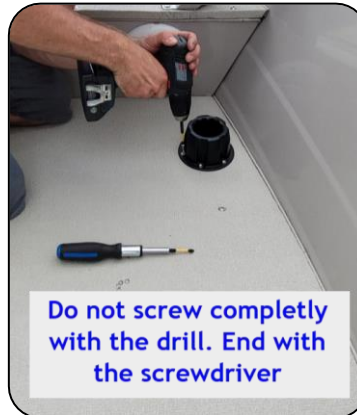
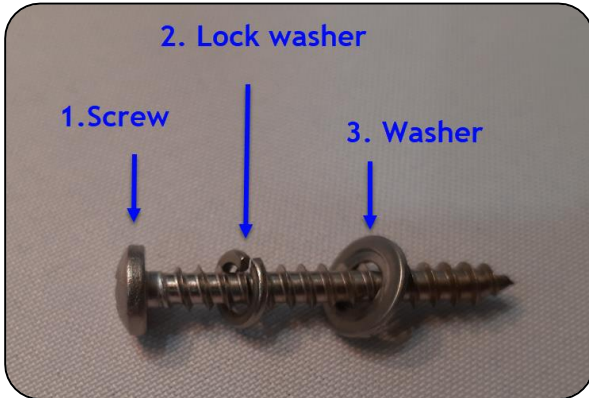
BE CAREFULL FOR THE HULL!



11. Clean the surface of drilling residue and position the base. Respect the order of the image below: **1. Screw, 2. Self-locking washer and 3. Flat washer.** Partially tighten the 6 screws with a drill, maintaining good downward pressure. Finalize the tightening with the screwdriver until the self-locking washer is flat without over tightening.

Warning: Pressure on the drill is important to avoid damaging PH #2 head of screw especially if you are crossing an aluminum channel underneath the floor.

Marine plywood is soft wood and screw thread are easy to damage. Do not over tighten.



Do not screw completely with the drill. End with the screwdriver



12. Insert the support into its base and place your fishing rods.

LET'S GO FISHING!



13. For bolted installation.

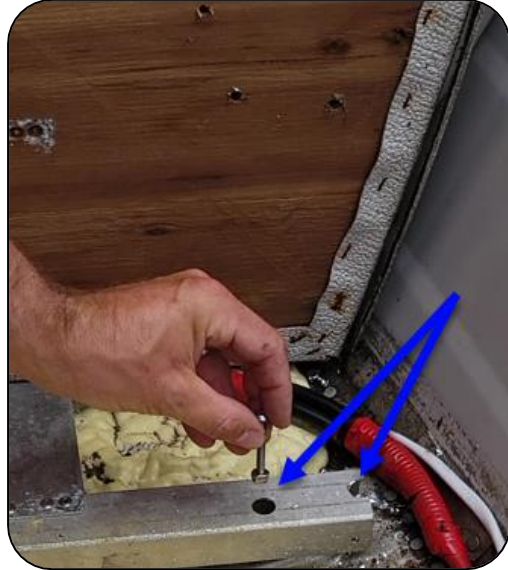
Warning! Make sure you have access underneath to put the washers and nuts on the other side before drilling

Use bag of screws C and a 1/8 " drill bit to pre-drill. Remove the rod holder and drill at the 6 marks. Then oversize the hole with a 7/32 " drill bit.

BE CAREFULL FOR THE HULL!



14. Lift the floor and check if there are conflict with the bolts. If some holes drilled in step 13 are in aluminum studs, enlarge those holes with a ½ ” drill bit to make clearance for bolts and nuts.

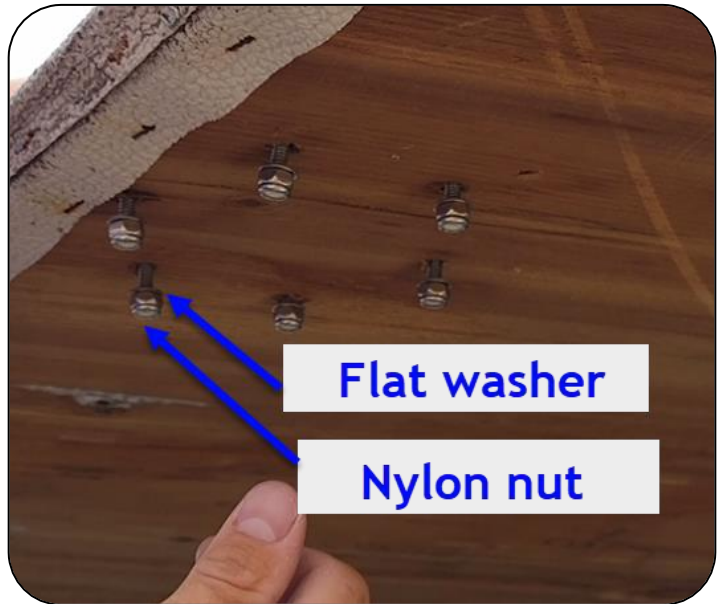


15. Find a place to have access over and under.

Align the base with the holes drilled previously. Put a flat washer into the bolts and insert them in the base.



16. Underneath, put on each bolt a flat washer and a nylon nut.



17. Use 3/8 "wrench underneath and the drill with Phillips # 2 on top and tighten the 6 nuts. Do not over-tighten!



18. Replace the boat floor by lining up the bolts in the holes. Then put back all the floor screws.



19. Insert the support into its base and place your fishing rods.

LET'S GO FISHING!

